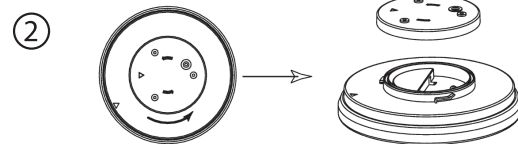
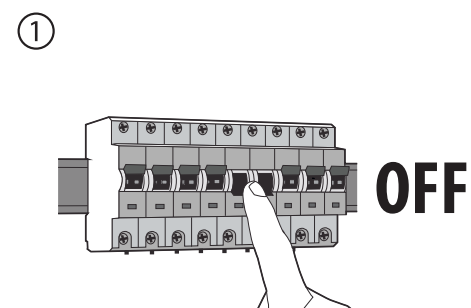


# paul russells<sup>®</sup> CEILING LIGHT

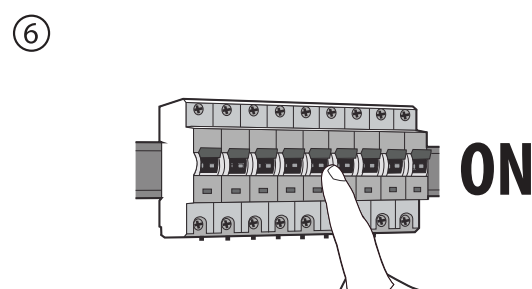
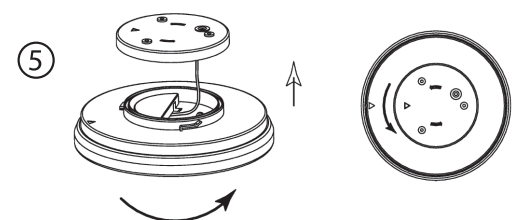
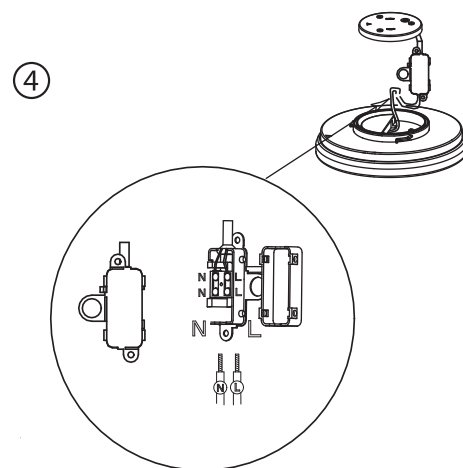
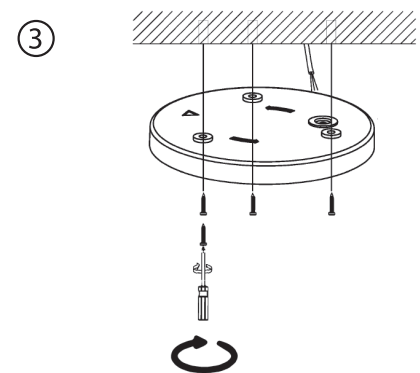
Please read these instructions before installation and retain this instruction manual for future reference.

## IMPORTANT WARNING WHEN DRILLING IN CEILINGS/WALLS:

- Before you begin drilling, ensure there are no gas, water, or power lines in close proximity to the area where you intend to drill.
- We recommend that luminaires be installed by a qualified electrician.
- Observe the condition of the ceiling or wall, as the supplied materials may not be suitable for all types of ceilings and walls.
- If you're uncertain about the appropriate screws and dowels for your particular ceiling or wall, seek assistance from your retailer.
- We cannot be held liable for any issues that may arise due to an improper installation.



Triangle alignment makes installation easier



# paul russells<sup>®</sup> CEILING LIGHT

## SAFETY INSTRUCTIONS

Please carefully read this information before installing or operating this product. Retain these assembly instructions for future reference. The installation of lights should only be carried out by authorised specialists in accordance with the relevant electrical installation regulations. Always adhere to the technical details provided on the label and in these assembly instructions.

**CAUTION:** Before you begin assembling, make sure to switch off the main by either turning off the automatic circuit breaker or removing the fuse.

Please take note of the following important instructions for the safe and proper use of the light: Modifying the mechanical or electrical structure of the light is strictly prohibited. Ensure that electrical devices are kept securely out of the reach of children. Exercise caution during assembly to prevent any damage to the installation and connection lines. When maintaining the lights, pay attention to the surfaces and ensure that no moisture enters the connection rooms or comes into contact with the main voltage lead parts. The manufacturer is not responsible for any additional damage caused by not following the safety and assembly instructions. Please do not dispose of the product in household waste after its service life ends; instead, return it to your local waste disposal centre for recycling. When the light source reaches the end of its life, the entire luminaire must be replaced.

[www.paulrussells.com](http://www.paulrussells.com)

